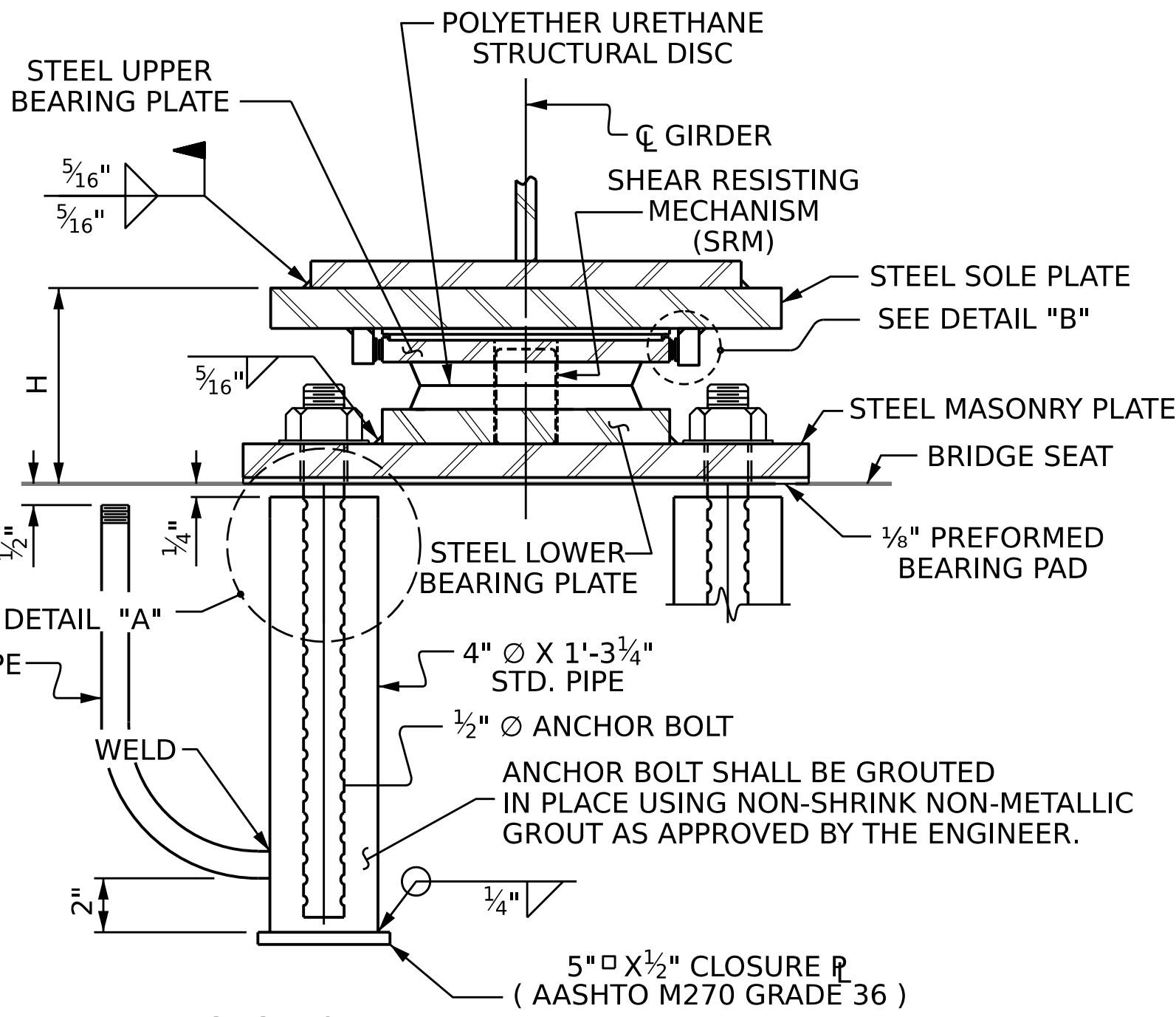
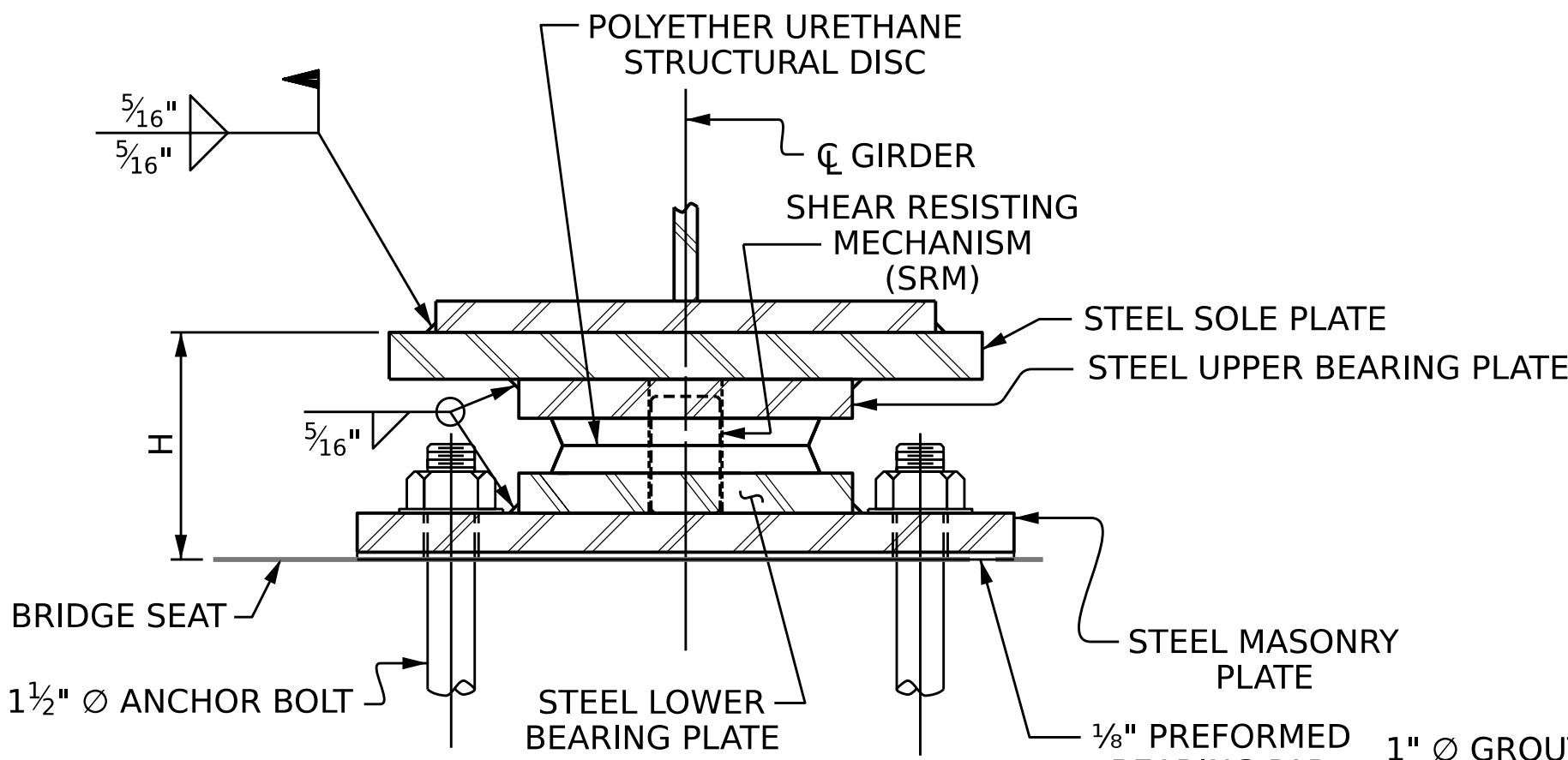
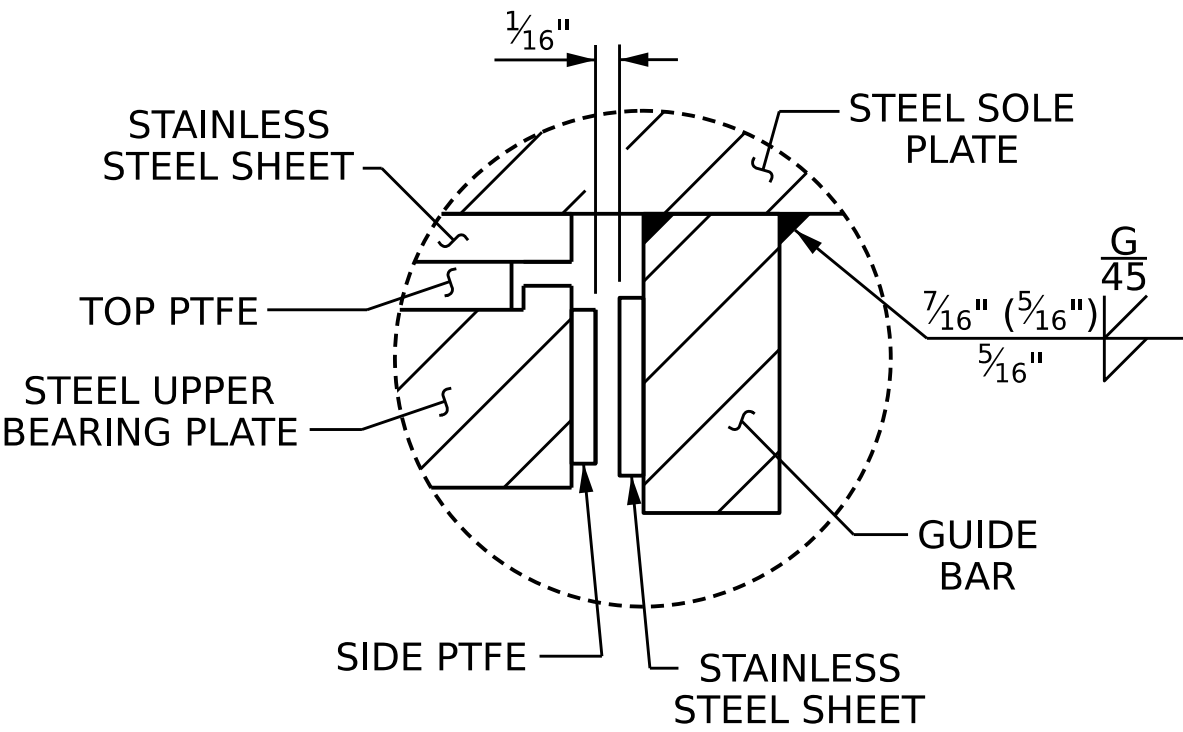
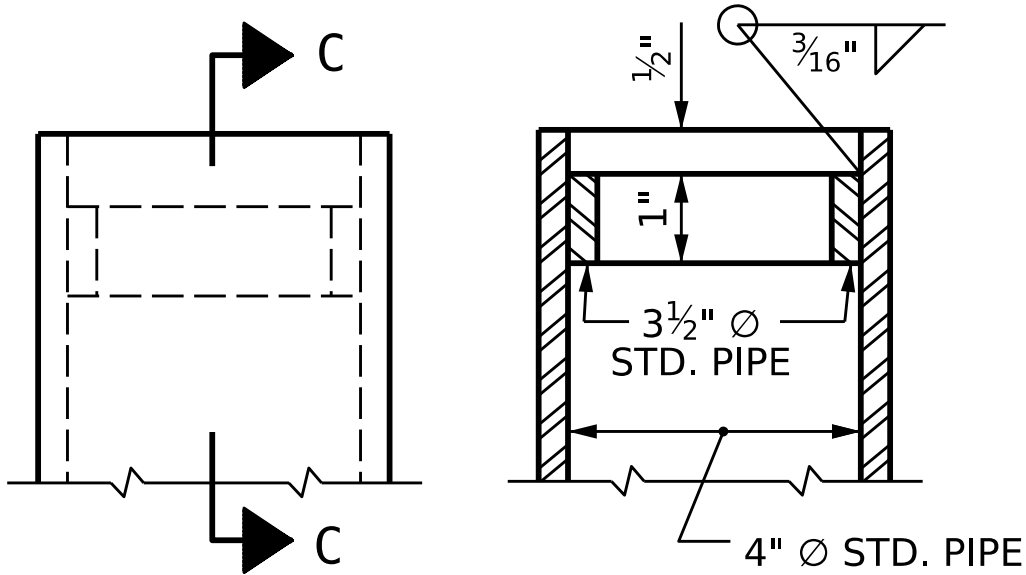


NOTE:
DIMENSIONS "W" AND "T" SHALL BE DETERMINED
BY THE BEARING MANUFACTURER.

SOLE PLATE DETAILS

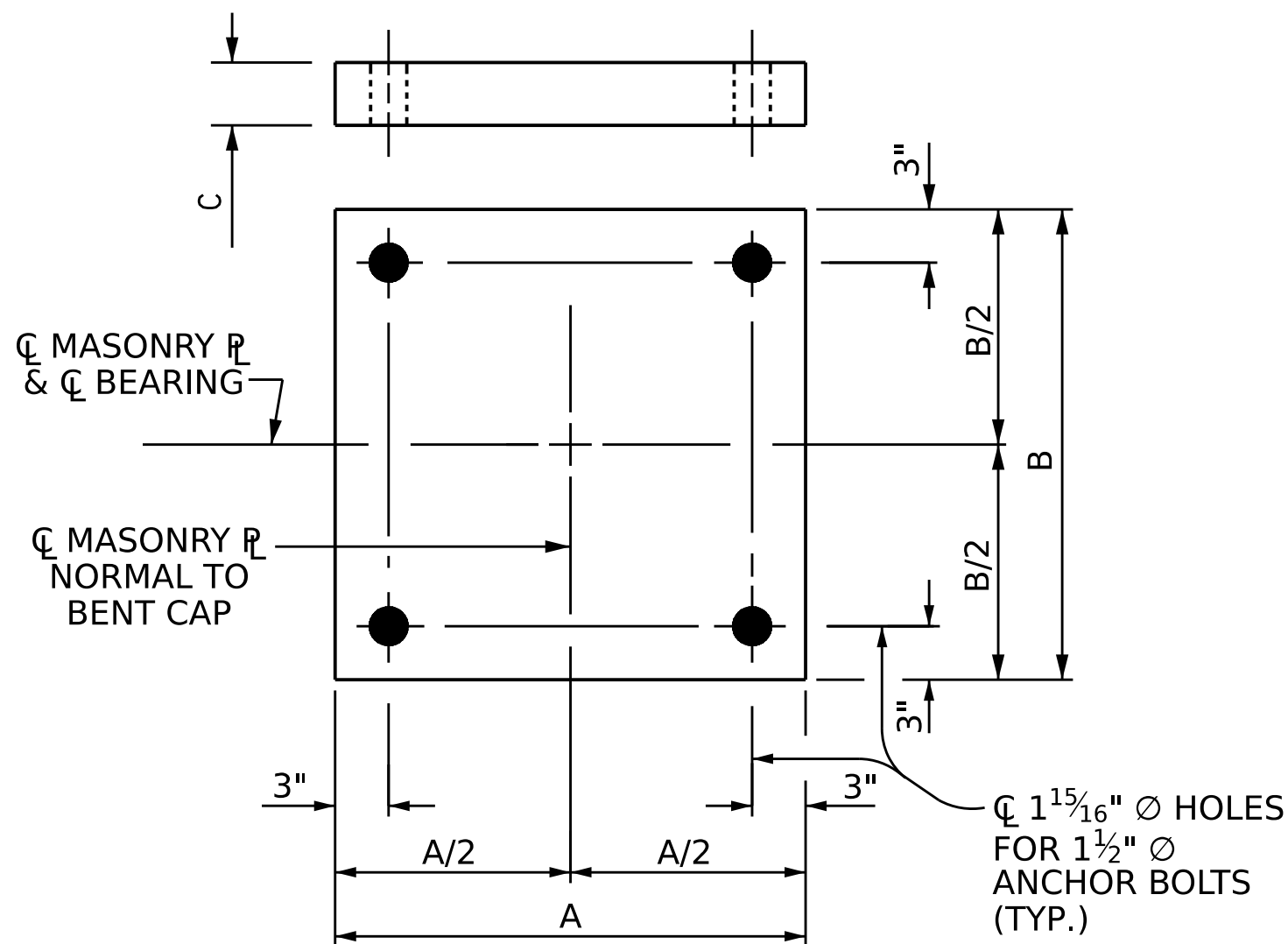


SECTION A-A
DB1, FIXED

SECTION B-B
DB2, EXP.

DETAIL "A"

DETAIL "B"



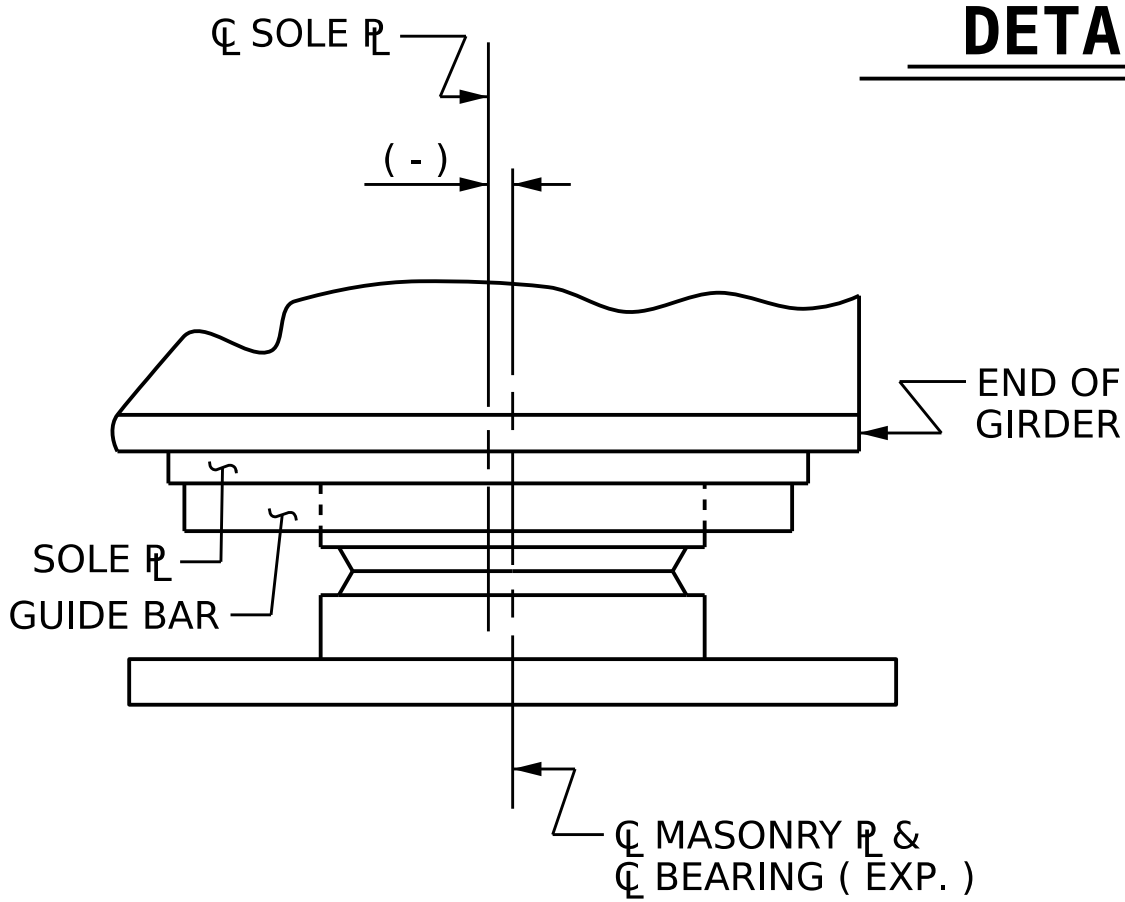
PLAN

MASONRY PLATE
DETAILS

PLATE SETTING DATA (EXPANSION DISC BEARINGS)				
LOCATION	TEMPERATURE AT TIME OF SETTING			*
	45° F	60° F	90° F	

* CORRECTION FOR END ROTATION DUE TO WEIGHT OF SLAB AND
COMPOSITE DEAD LOAD.

TEMPERATURE SETTING DETAIL



DESIGNATIONS		LOCATION	NUMBER OF BEARINGS	DIMENSIONS				LOADS AND MOVEMENT	
				BEARING H (IN.)	MASONRY PLATE			SOLE PLATE	
BEARINGS	MASONRY PL				A (IN.)	B (IN.)	C (IN.)	TOP SLOPE (%)	L (IN.)

UNFACTORED VERTICAL LOAD (KIPS)		FACTORED HORIZONTAL LOAD (KIPS)	ONE-WAY MOVEMENT (IN.)
DEAD	LIVE		
DC	DW	LL+IM	

NOTES

FOR DISC BEARINGS, SEE SPECIAL PROVISIONS.

ALL BEARING PLATES SHALL BE AASHTO M270 GRADE 50W OR GRADE 50.

AT ALL POINTS OF SUPPORT, NUTS FOR ANCHOR BOLTS SHALL BE
FINGER-TIGHTENED PLUS AN ADDITIONAL ¼ TURN. THE THREAD
OF THE NUT AND BOLT SHALL THEN BE BURRED WITH A SHARP POINTED
TOOL.

WHEN WELDING THE SOLE PLATE TO THE GIRDER, USE TEMPERATURE
INDICATING WAX PENS, OR OTHER SUITABLE MEANS, TO ENSURE
THAT THE TEMPERATURE OF THE BEARING DOES NOT EXCEED 250°F.
TEMPERATURES ABOVE THIS MAY DAMAGE THE TFE OR URETHANE
DISC.

AFTER BEARING ASSEMBLY IS IN PLACE AND ANCHOR BOLTS HAVE
BEEN FINALLY POSITIONED, THEY SHALL BE GROUTED IN PLACE AS
SHOWN.

THE CLOSURE PLATE, GROUT PIPE, AND STANDARD PIPE FOR THIS
ASSEMBLY NEED NOT BE GALVANIZED.

SOLE PLATES SHOULD BE WELDED TO GIRDER FLANGES AND ANCHOR
BOLTS SHOULD BE GROUTED BEFORE FALSEWORK IS PLACED.

ALL SURFACES OF BEARING PLATES SHALL BE SMOOTH AND STRAIGHT.

FOR ATTACHMENT OF THE STAINLESS STEEL SHEETS TO THE STEEL SOLE
PLATE AND GUIDE BARS, AS WELL AS THE TOP AND SIDE PTFE SHEETS TO
THE STEEL UPPER BEARING PLATE, SEE SPECIAL PROVISIONS.

FOR THERMAL SPRAYED COATINGS (METALLIZATION), SEE SPECIAL
PROVISIONS.

THE MINIMUM ROTATIONAL CAPACITY FOR ALL BEARINGS SHALL
BE 0.02 RADIAN.

PROJECT NO. _____

COUNTY _____

STATION: _____

STATE OF NORTH CAROLINA DEPARTMENT OF TRANSPORTATION RALEIGH					
STANDARD DISC BEARING DETAILS					
REVISIONS					SHEET NO.
NO.	BY:	DATE:	NO.	BY:	
1			3		TOTAL SHEETS
2			4		

DOCUMENT NOT CONSIDERED
FINAL UNLESS ALL
SIGNATURES COMPLETED

ASSEMBLED BY:		DATE :	
CHECKED BY :		DATE :	
DRAWN BY :	TMG	08/13	REV. 12/17
CHECKED BY :	EKP	10/13	MAA/THC